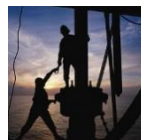
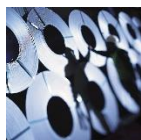
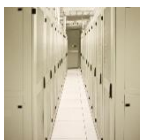


QSeal Push-Pull Connectors



Military Aerospace Shipboard Industrial Mining Transportation Oil & Gas Broadcast Manufacturing Marine Energy Medical



Contents	
Product Introduction	Page 1
Specifications	Page 2
Part Number Builders	Page 3 - 5
Plug Line Drawings	Page 6 - 7
Receptacle Line Drawings	Page 8
QLine Adapter Line Drawings	Page 9
Termini + Accessories	Page 10



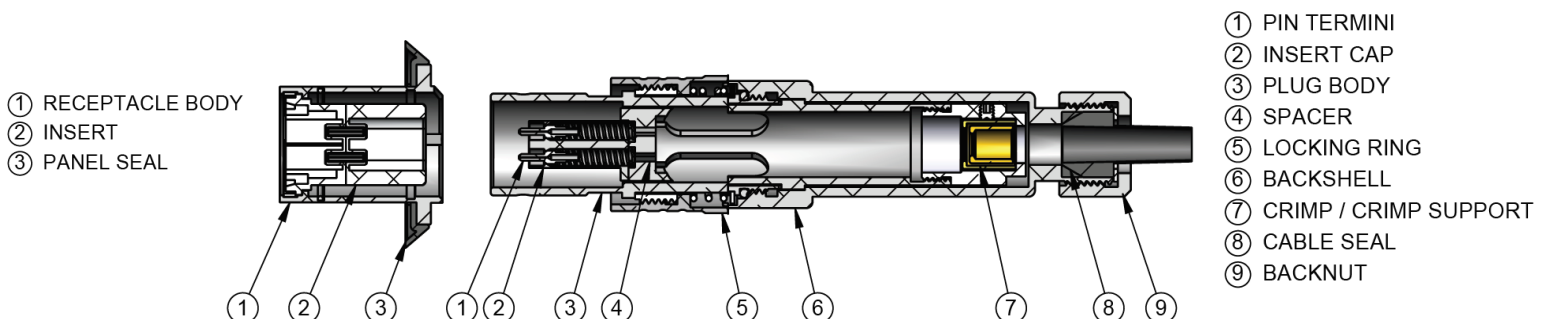
The QPC QSeal Connector line features 2 and 4 Channel Push-Pull Plugs that are IP67 Sealed (Dust Tight & Water Immersion to 1 Meter), and direct LC-Duplex interface panel mount receptacles. This allows simple integration into SFP Module based systems, because standard off-the-shelf patch cables can be used. QSeal plugs are available with standard straight backshells as well as 90-degree backshells for applications with limited clearance. QSeal Receptacles can be ordered with five different color-coded sealing gaskets for network visibility. QSeal connectors are designed using industry standard 1.25mm ceramic ferrules which can be installed in a customer's facility or in the field using common fiber optic termination equipment. Based on user feedback, QPC's design does not include shutters enabling easy cleaning, inspection, and maintenance.

The QPC QLine Adapter is a stand-alone device that allows two QSeal plugs, or other plug types, to be connected. The QLine Adapter can also serve as a breakout from a plug to individual LC, ST, or SC connectors. Depending on system requirements, QLine Adapters can be configured in Straight or Crossed polarities.

The QPC QSeal Connector line is intermateable with Neutrik's opticalCON DUO and QUAD connectors, both ADVANCED and LITE versions.

The QPC QSeal Connectors are most commonly used in Broadcast, Pro-Audio, and Entertainment applications, but they are rugged enough for a variety of other systems / environments.

- 2Ch / 4Ch Pin & Socket Push-Pull Physical Contact Connector System
- Plugs: With and without Rubber Grip, with Straight or 90 Degree Backshell
- Receptacles: XLR Compatible Flange Mount with direct LC Duplex Connection on the back
- Cable OD up to 6.5mm (Consult QPC for other options)
- Intermateability: Neutrik opticalCON Duo (2Ch-Fiber connectivity only) and opticalCON Quad (4Ch)
- QLine Adapter allows Plug to Plug Connections in longer systems
- Sealed to IP67



Specifications:

Insertion Loss: SM (9/125µm)	0.15-0.45dB Max.
MM (50/125µm)	0.15-0.45dB Max.
MM (62.5/125µm)	0.15-0.45dB Max.
Return Loss: SM (9/125µm)	--55dB UPC
Operating Temperature:	-40°C to +75°C
Mating Durability:	> 500 Cycles
IP Rating:	IP67 - Dust Tight, No ingress of dust; complete protection against contact, Water Immersion, up to 1m
Material & Plating Specification:	Black Hard Anodize: 6061-T6 Aluminum; Anodize per MIL-A-8625 TYPE III CLASS 2, .0022/.0018 Thick (50% Penetration), Black

Part Number Builder, QSeal Plug:

Sample Part Number: QSEAL-PEFN-02CH-S65		QSEAL	- PEF	N	- 02CH -	S65
1 Series QSEAL						
2 Product Type PEF - PLUG, FEMALE DUSTCOVER PGF - PLUG, RUBBER GRIP, FEMALE DUSTCOVER						
3 Material & Finish Code N - ALUMINUM, BLACK HARD ANODIZE (CONSULT QPC FOR OTHER OPTIONS)						
4 Channel Count 02CH - 2 CHANNEL, 2x 126µm TERMINI 04CH - 4 CHANNEL, 4x 126µm TERMINI						
5 Strain Relief 45 - BACKSHELL, 3.6mm TO 4.5mm O.D. CABLE 55 - BACKSHELL, 4.6mm TO 5.5mm O.D. CABLE 65 - BACKSHELL, 5.6mm TO 6.5mm O.D. CABLE (CONSULT QPC FOR OTHER OPTIONS)						

Part Number Builder, QSeal 90° Plug:

Sample Part Number: QSEAL90-PEFN-02CH-S65		QSEAL90	- PEF	N	- 02CH -	S65
1 Series QSEAL90						
2 Product Type PEF - PLUG, FEMALE DUSTCOVER PGF - PLUG, FEMALE DUSTCOVER WITH RUBBER GRIP						
3 Material & Finish Code N - ALUMINUM, BLACK HARD ANODIZE (CONSULT QPC FOR OTHER OPTIONS)						
4 Channel Count 02CH - 2 CHANNEL, 2x 126µm TERMINI 04CH - 4 CHANNEL, 4x 126µm TERMINI						
5 Strain Relief 45 - BACKSHELL, 3.6mm TO 4.5mm O.D. CABLE 55 - BACKSHELL, 4.6mm TO 5.5mm O.D. CABLE 65 - BACKSHELL, 5.6mm TO 6.5mm O.D. CABLE (CONSULT QPC FOR OTHER OPTIONS)						

Part Number Builder, QSeal Receptacle:

Sample Part Number: QSEAL-RMN-02CH-WH		QSEAL	- RM	N	- 02CH -	WH
1 <u>Series</u> QSEAL						
2 <u>Product Type</u> RM - RECP FLANGE MOUNT, RUBBER SEAL / DUSTCOVER						
3 <u>Material & Finish Code</u> N - ALUMINUM, BLACK HARD ANODIZE (CONSULT QPC FOR OTHER OPTIONS)						
4 <u>Channel Count</u> 02CH - 2 CHANNEL 04CH - 4 CHANNEL						
5 <u>Seal / Dustcover</u> (OMIT FOR BLACK PANEL SEAL) BL - BLUE PANEL SEAL GR - GREEN PANEL SEAL RD - RED PANEL SEAL WH - WHITE PANEL SEAL						

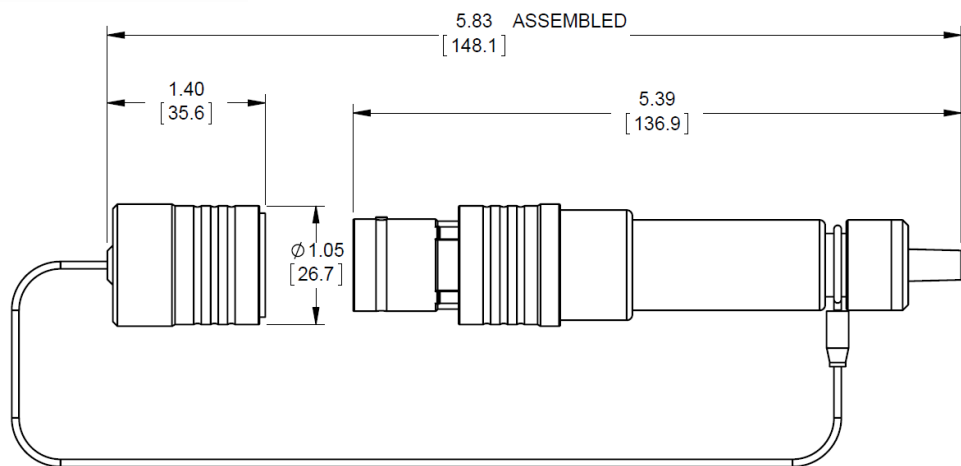
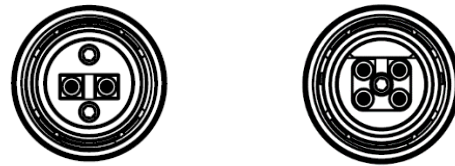
Part Number Builder, QLine Adapter:

Sample Part Number: QLINE-QMINI-QMINI-N-02SM-09C		QLINE	-	QMINI	-	QMINI	-	N	-	02	SM	-	09	C
1 Series QLINE														
2 Adapter Side A QSEAL - RECEPTACLE, QSEAL QMINI - RECEPTACLE, QMINI Rx QMICO - RECEPTACLE, QMICO Rx LC - LC ADAPTER ST - ST ADAPTER SC - SC ADAPTER (CONSULT QPC FOR OTHER OPTIONS)														
3 Adapter Side B QSEAL - RECEPTACLE, QSEAL QMINI - RECEPTACLE, QMINI Rx QMICO - RECEPTACLE, QMICO Rx LC - LC ADAPTER ST - ST ADAPTER SC - SC ADAPTER (CONSULT QPC FOR OTHER OPTIONS)														
4 Material and Plating N - ALUMINUM, BLACK HARD ANODIZE (CONSULT QPC FOR OTHER OPTIONS)														
5 Channel Count 02 - 2 CHANNEL 04 - 4 CHANNEL														
6 Fiber Type SM - SINGLEMODE, 1310/1550nm MM - MULTIMODE, 850/1300nm														
7 Fiber Size 09 - 9/125µm SINGLEMODE 50 - 50/125µm MULTIMODE 62 - 62.5/125µm MULTIMODE														
8 Polarity C - Crossed S - Straight (CONSULT QPC FOR WIRING DIAGRAM)														

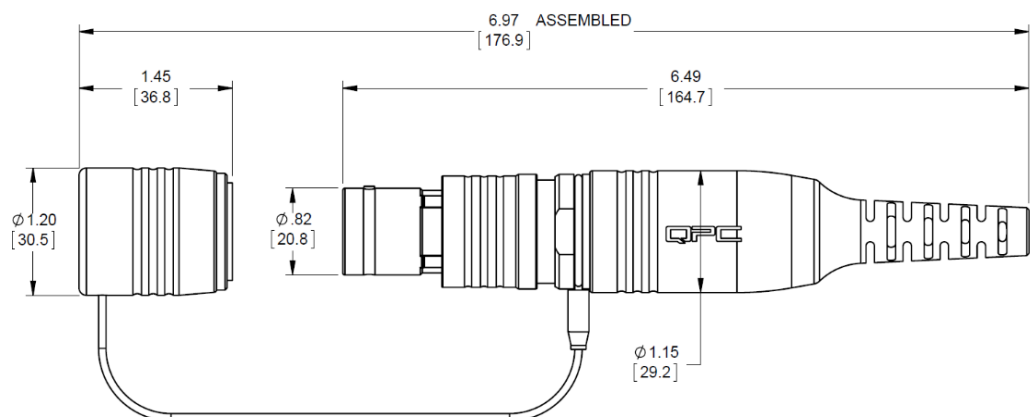
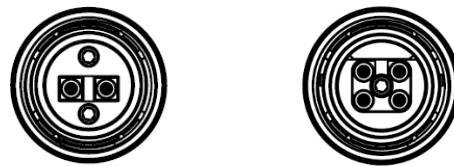


Part Number Shown: QLINE-QSEAL-QSEAL-N-02MM-50C

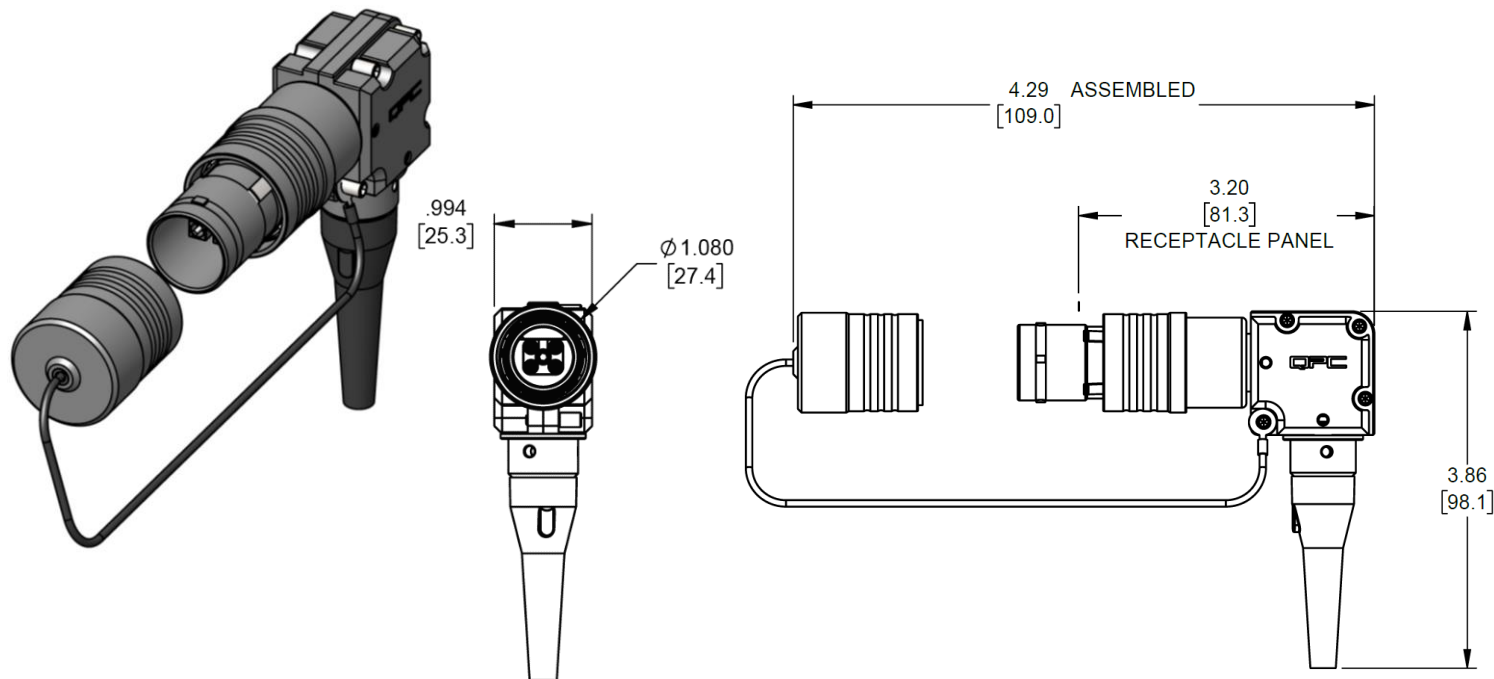
QSeal Plug, Female Dustcover:



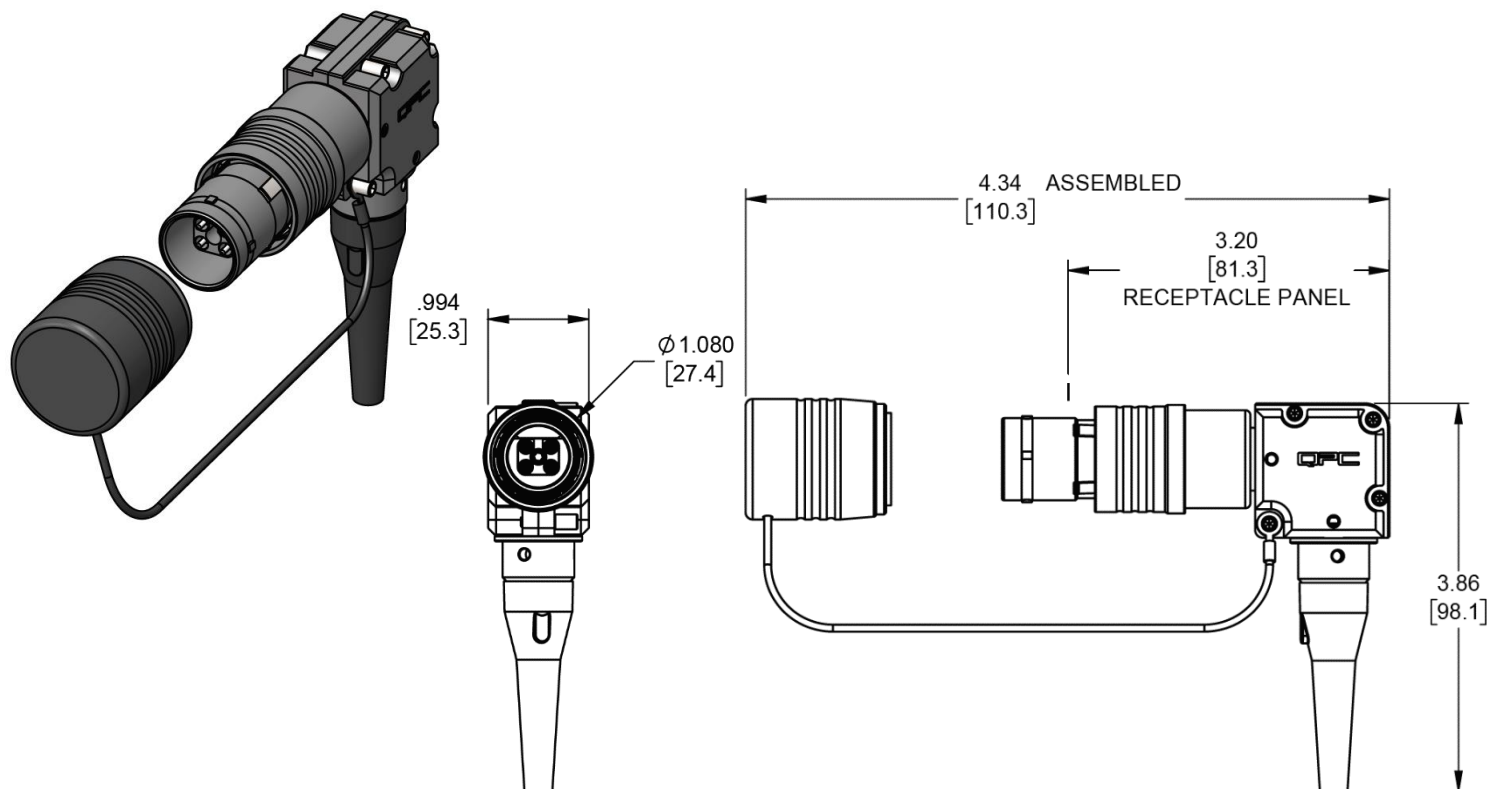
QSeal Plug, Rubber Grip, Female Dustcover:



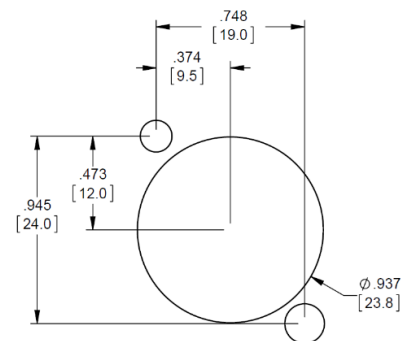
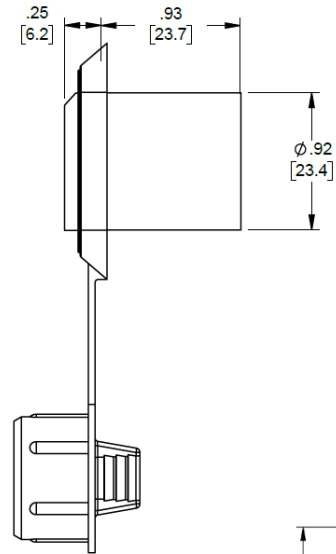
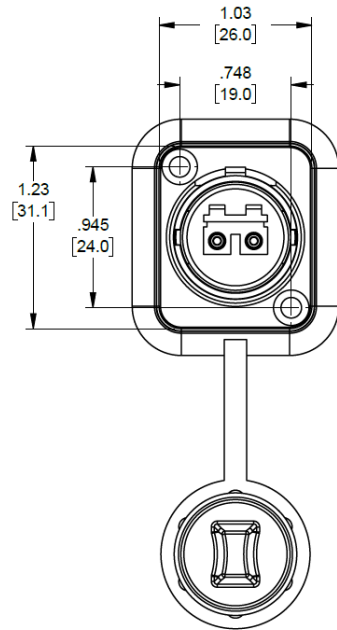
QSeal Plug, 90° Backshell, Female Dustcover:



QSeal Plug, 90° Backshell, Female Dustcover with Rubber Grip:

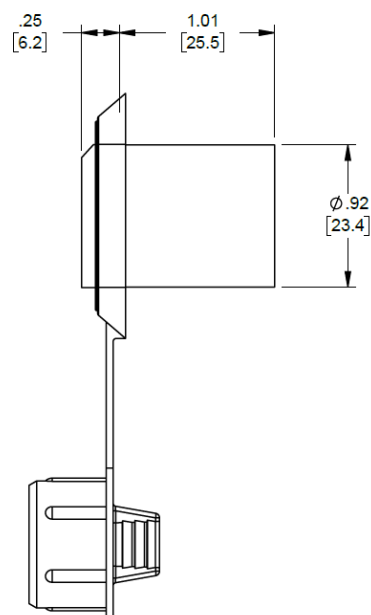
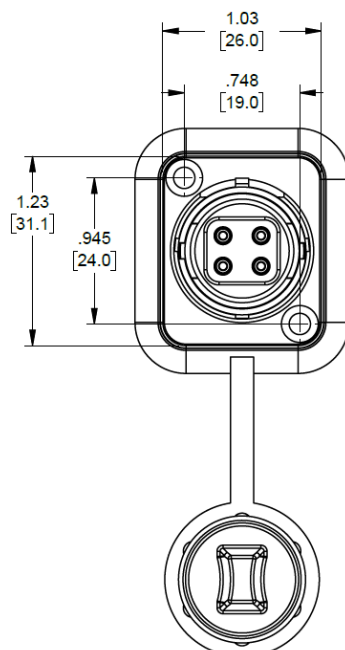


QSeal Receptacle, 2 Channel, Seal / Dustcover:

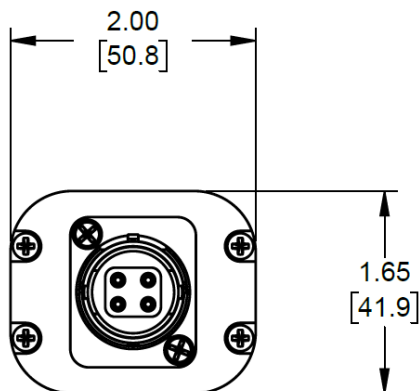
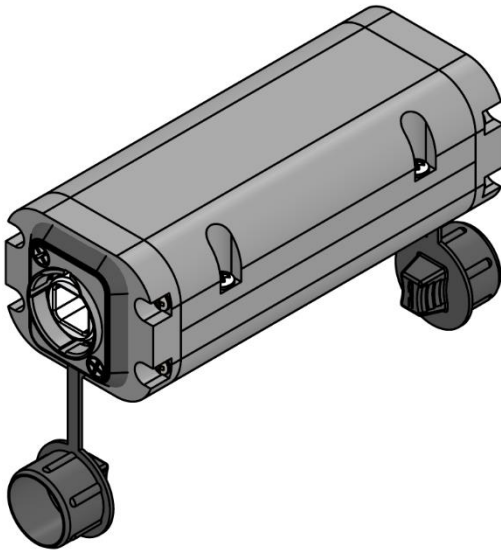


PANEL CUTOUT

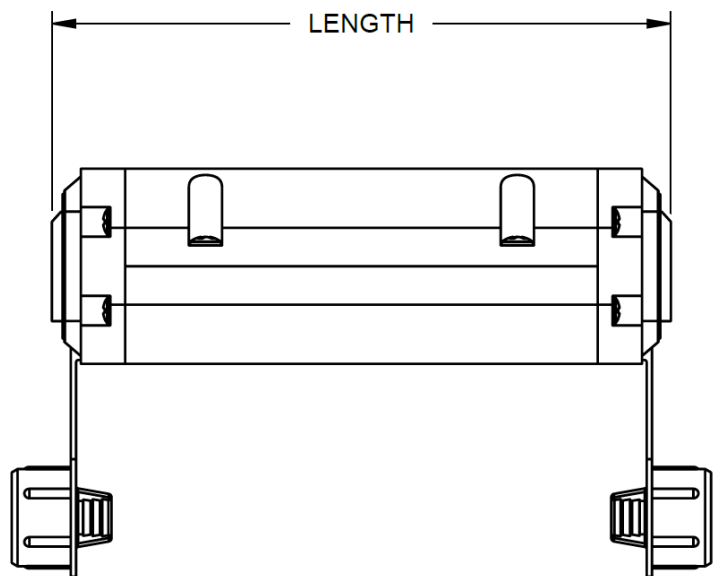
QSeal Receptacle, 4 Channel, Seal / Dustcover:



QLine Adapter:



Length varies from 5.25 - 6.50 inches,
depending on the interface connectors chosen



QSeal Termini:

PART NUMBER	DESCRIPTION
QSEAL-TRM	Terminus Assembly; QSeal; 1.25mm Ferrule OD; 126µm Singlemode/Multimode

QSeal Dustcovers:

PART NUMBER	DESCRIPTION
QSEAL-DCPEN	Dustcover; QSeal Plug; Female; Aluminum Black Hard Anodize
QSEAL-DCPGN	Dustcover; QSeal Plug; Female; Aluminum Black Hard Anodize with Rubber Grip
QSEAL-DCRG	Dustcover and Seal Kit; QSeal Receptacle; Rubber; Black
QSEAL-DCRGBL	Dustcover and Seal Kit; QSeal Receptacle; Rubber; Blue
QSEAL-DCRGGR	Dustcover and Seal Kit; QSeal Receptacle; Rubber; Green
QSEAL-DCRGRD	Dustcover and Seal Kit; QSeal Receptacle; Rubber; Red
QSEAL-DCRGWH	Dustcover and Seal Kit; QSeal Receptacle; Rubber; White
QSEAL-DCREN	Dustcover; QSeal Receptacle; Male; Aluminum Black Hard Anodize

QSeal Tools:

Tool PN	DESCRIPTION
TK-050	QSeal Tool Kit (Includes all items below)
PT-317	QSeal 2Ch and 4Ch Torque Fixture
PT-316	QSeal 2Ch Torque Fixture
PT-315	QSeal 4Ch Torque Fixture
PT-540	Hydraulic Hand Crimper
PT-541	Die Set, 0.324 Hex









Military Aerospace Shipboard Industrial Mining Transportation Oil & Gas Broadcast Manufacturing Marine Energy Medical

